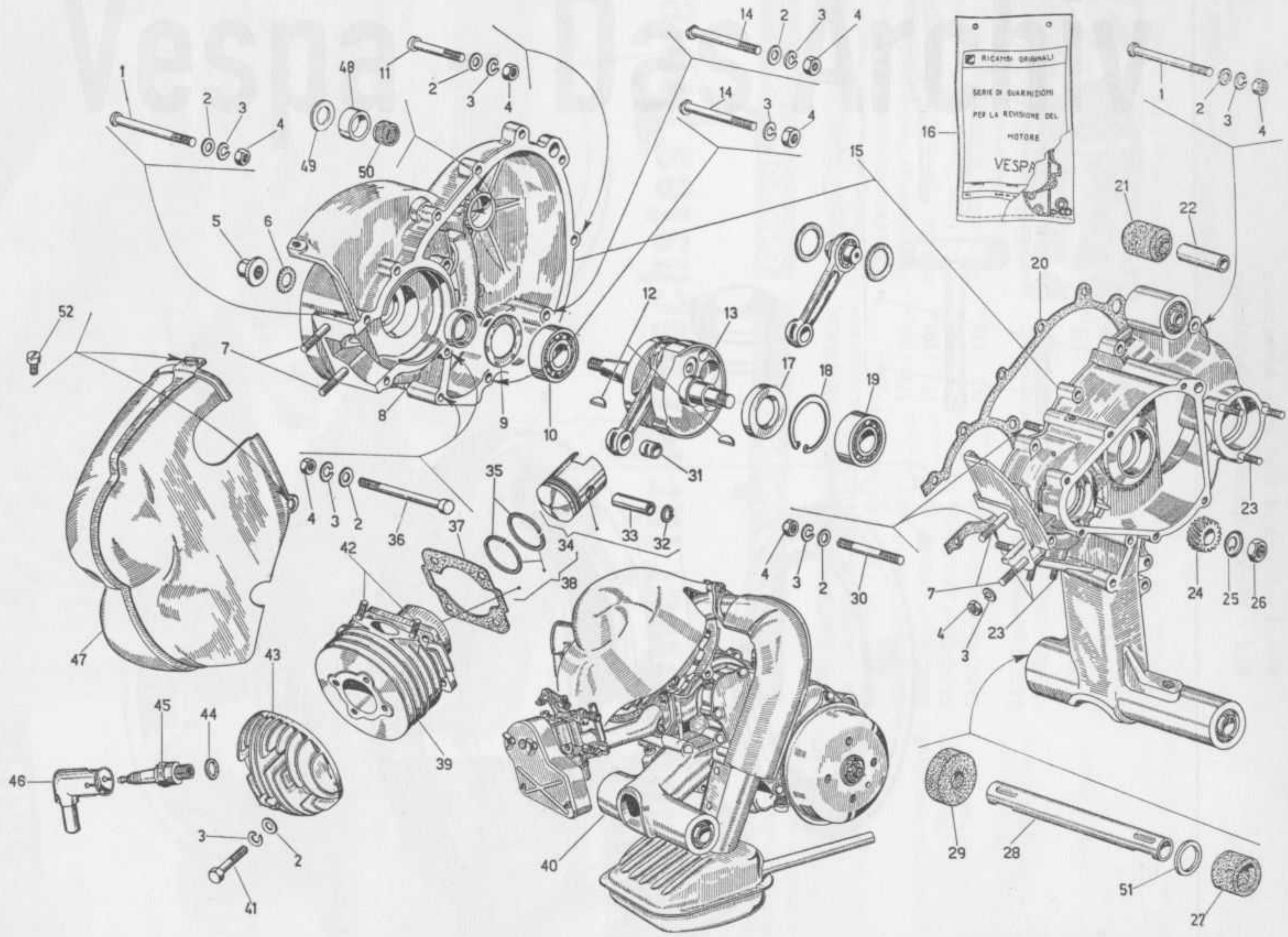
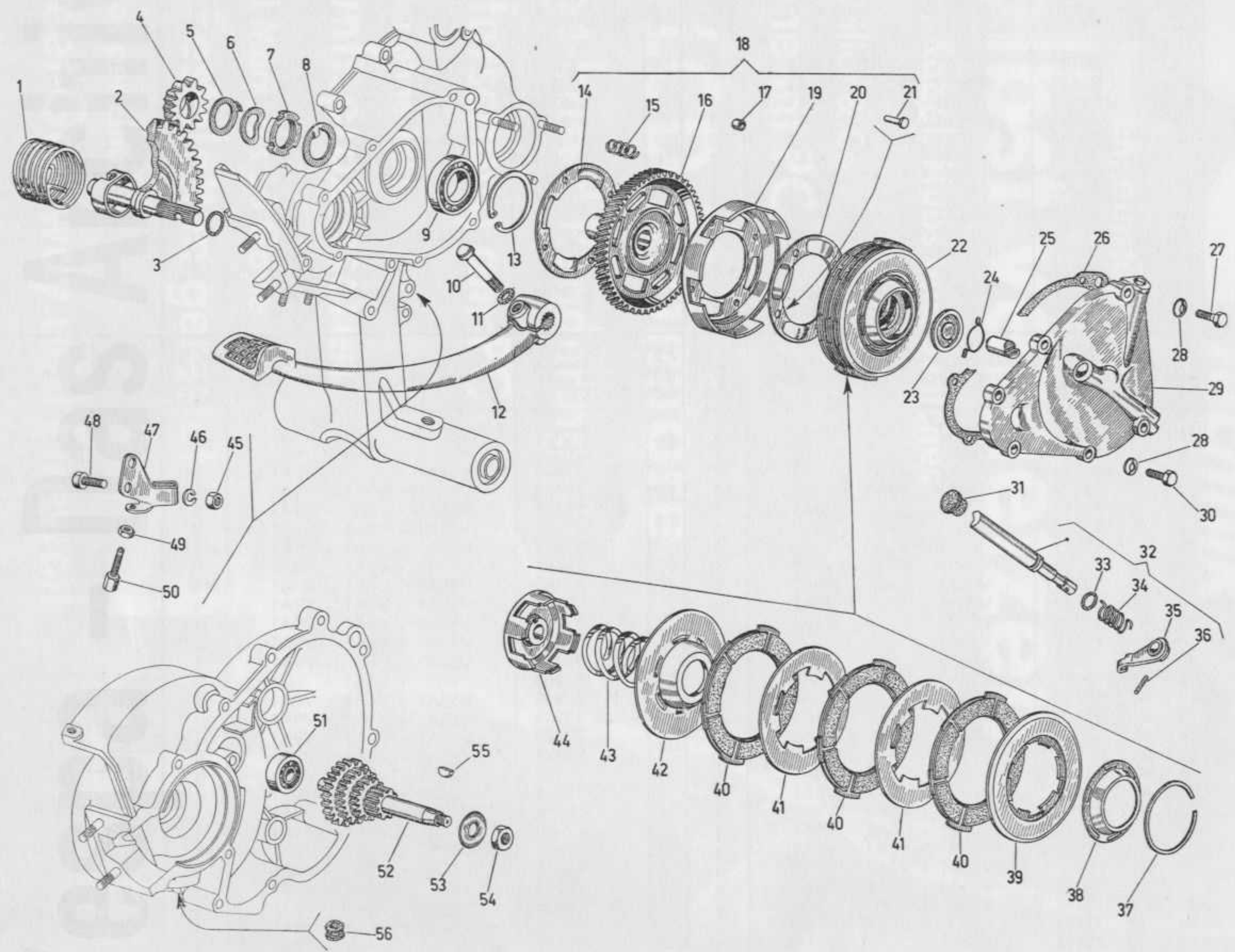


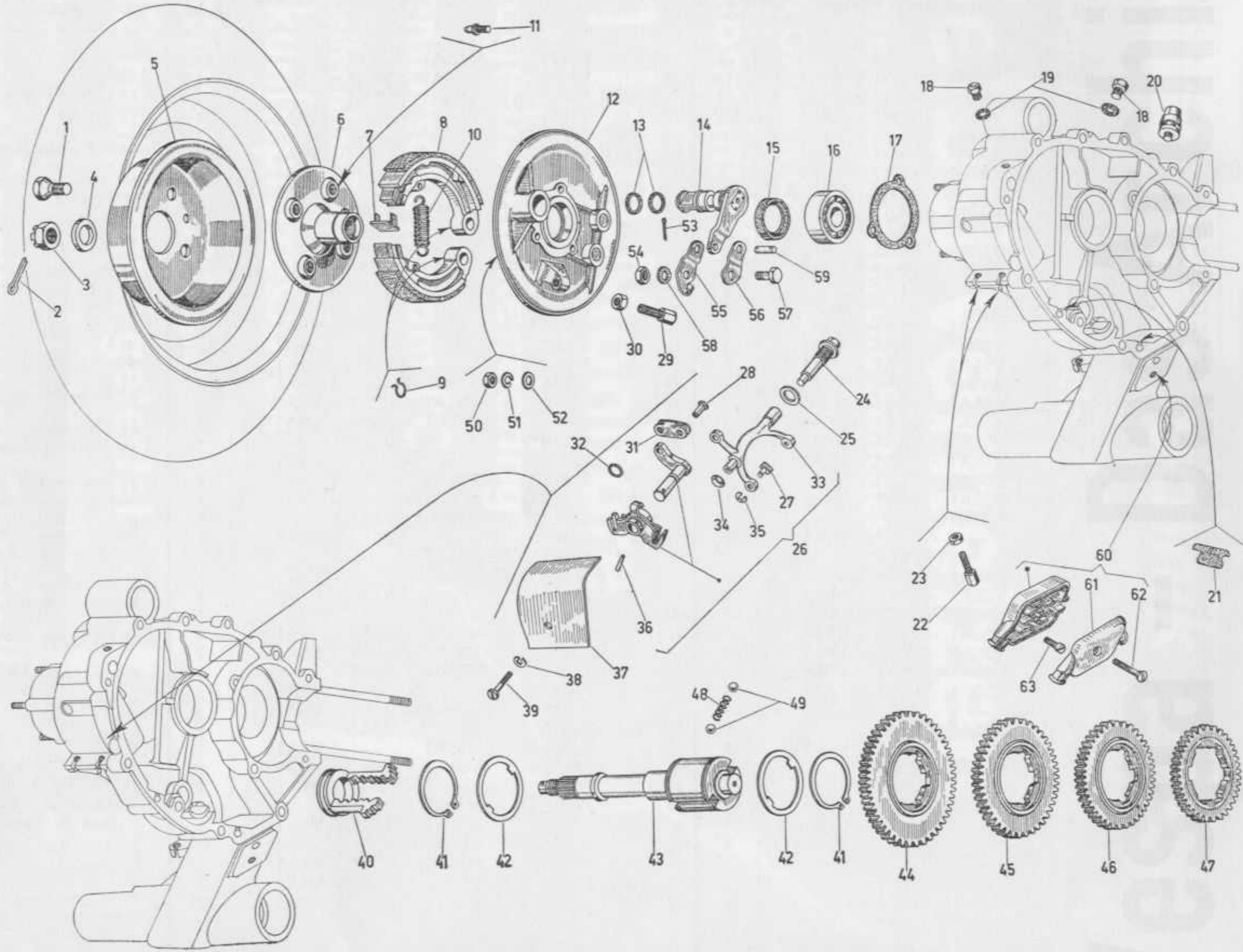
Carter - Cilindro - Albero motore
 Carter - Cylindre - Arbre moteur
 Crankcase - Cylinder - Crankshaft
 Kurbelgehäuse - Zylinder - Kurbelwelle



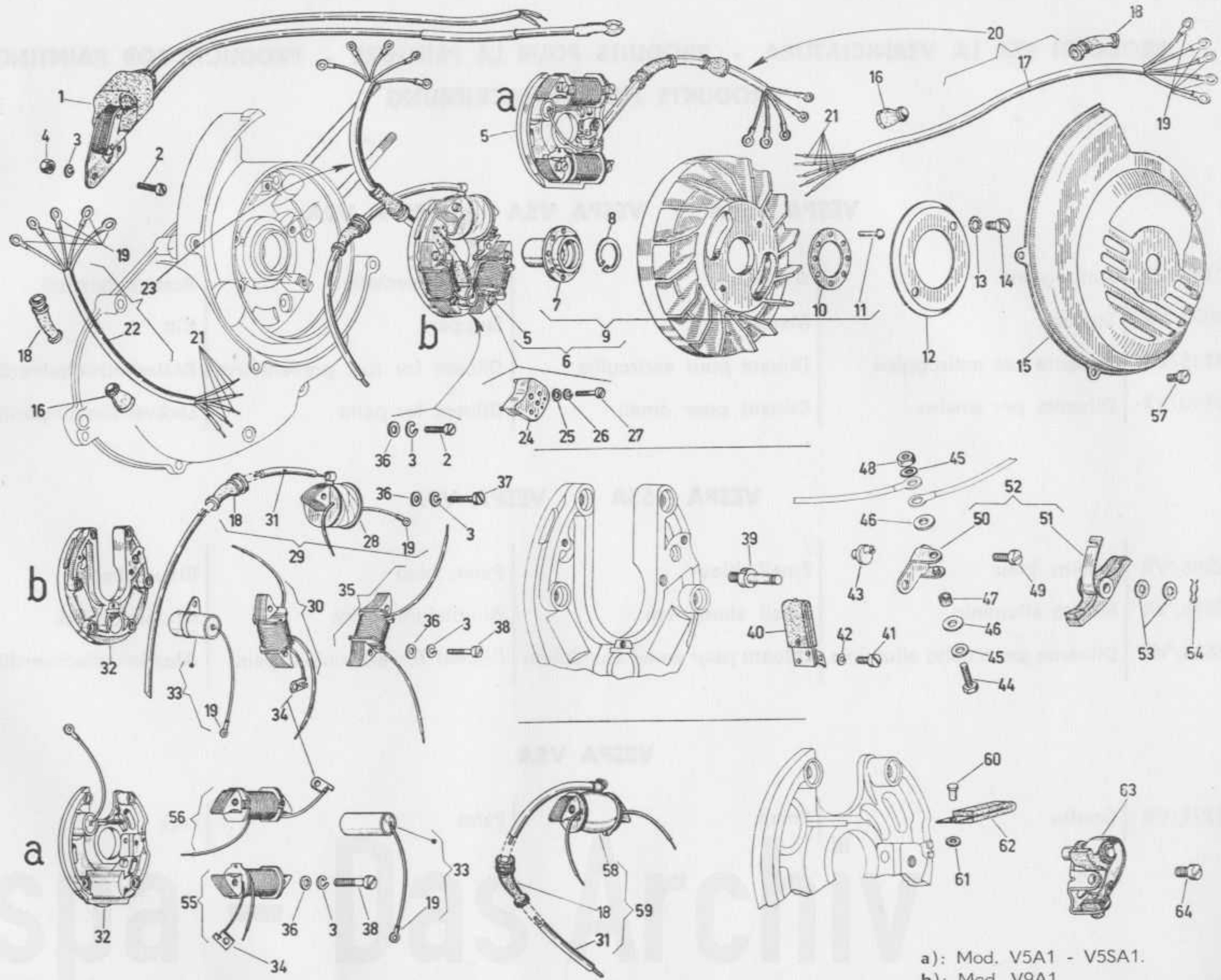
Frizione - Leva Avviamento
 Embrayage - Kickstarter
 Clutch - Kickstarter
 Kupplung - Kickstarter



Mozzo ruota posteriore - Ingran. cambio
Moyeu roue AR. - Engrenages du chang. de vitesses
Rear wheel hub - Gear group
Hinterradnabe - Schaltgetriebe

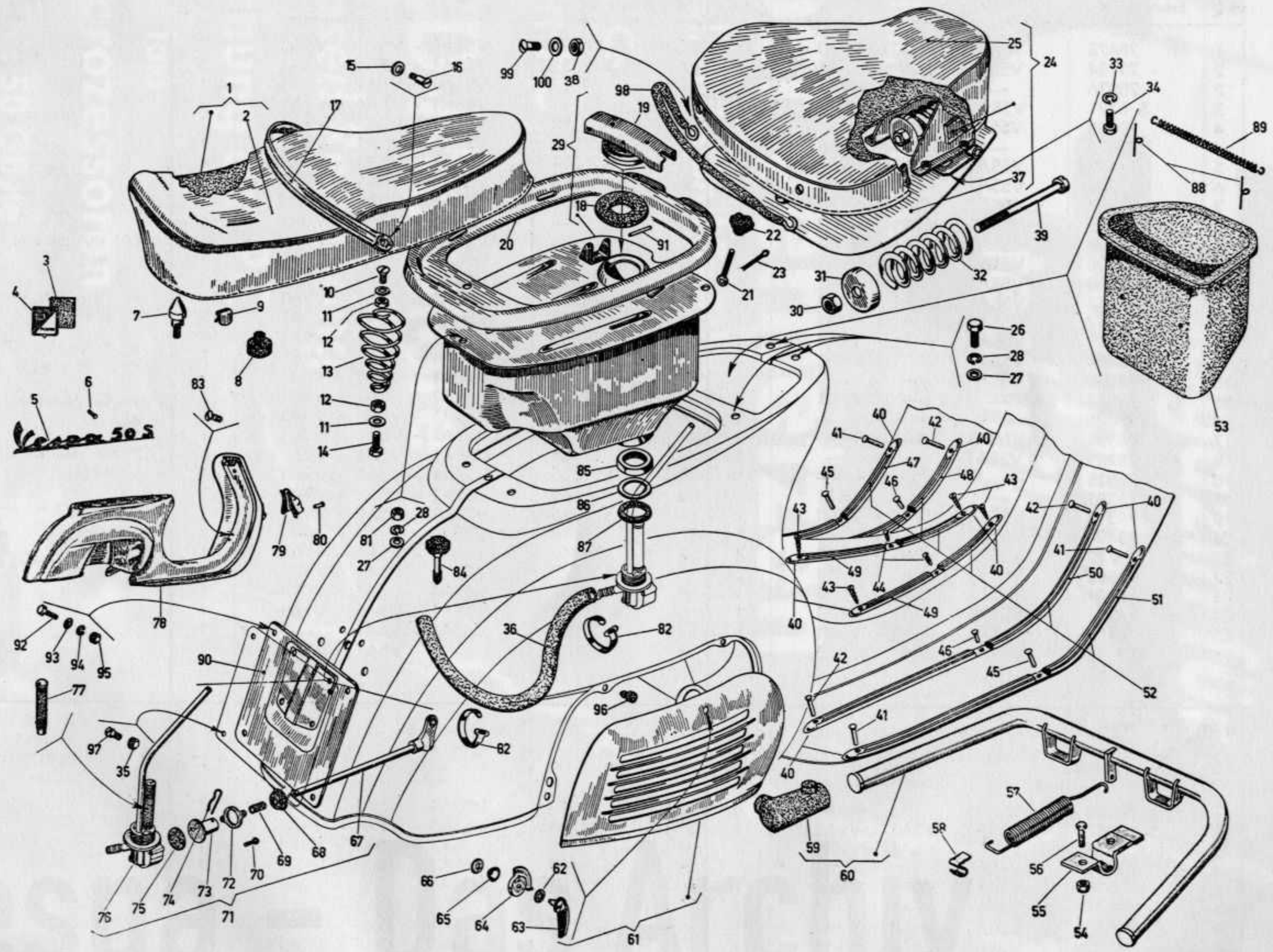


Volano magnete - Bobina A. T.
 Volant magnétique - Bobine H. T.
 Flywheel magneto - H. T. coil
 Lichtmaschine - Zündspule

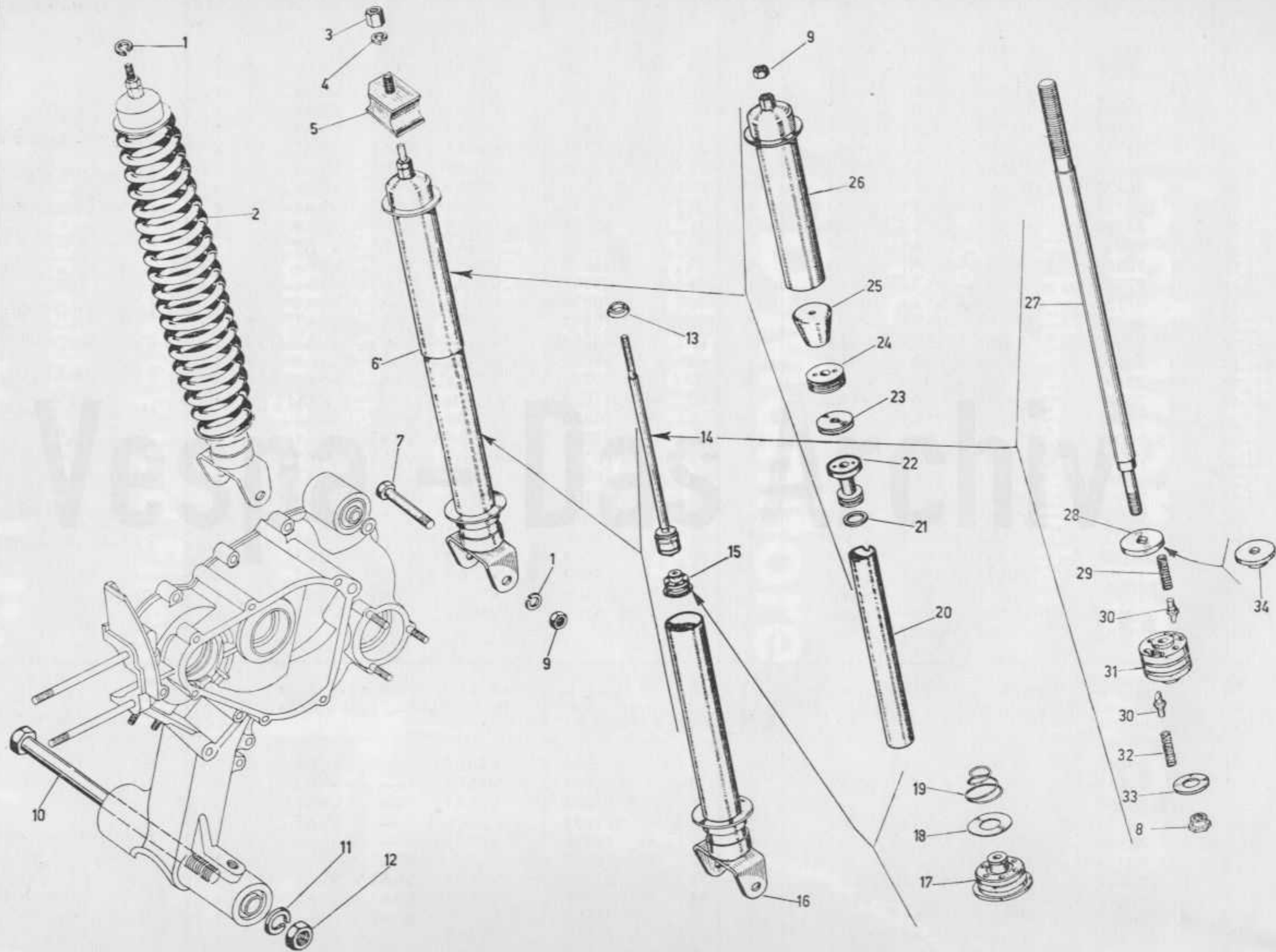


a): Mod. V5A1 - V5SA1.
 b): Mod. V9A1.

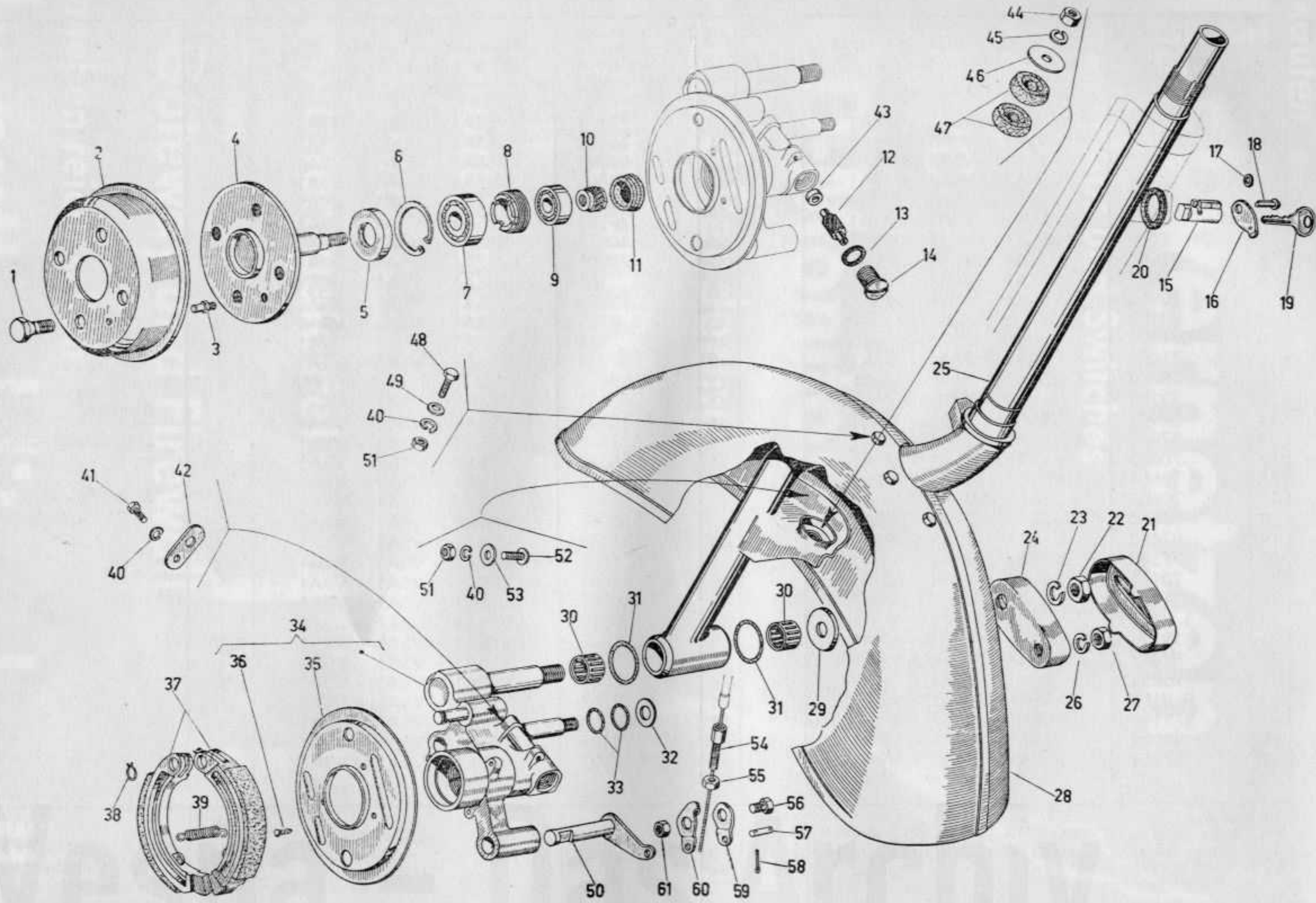
Telaio - Sella - Serbatoio
Châssis - Selle - Reservoir
Frame - Saddle - Fuel tank
Fahrgestell - Sattel - Tank



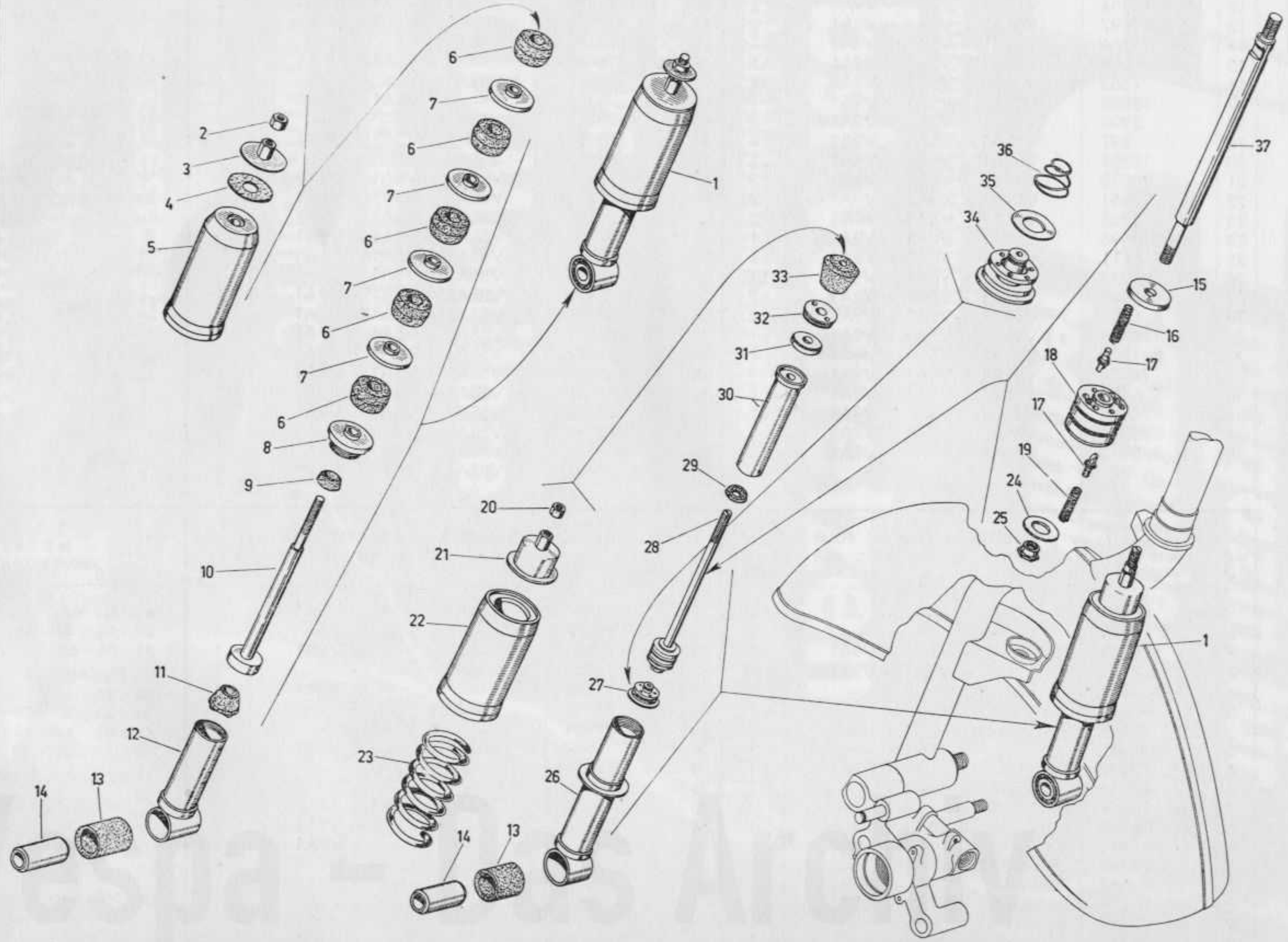
Ammortizzatore posteriore
Amortisseur AR.
Rear damper
Hinterer Stoßdämpfer



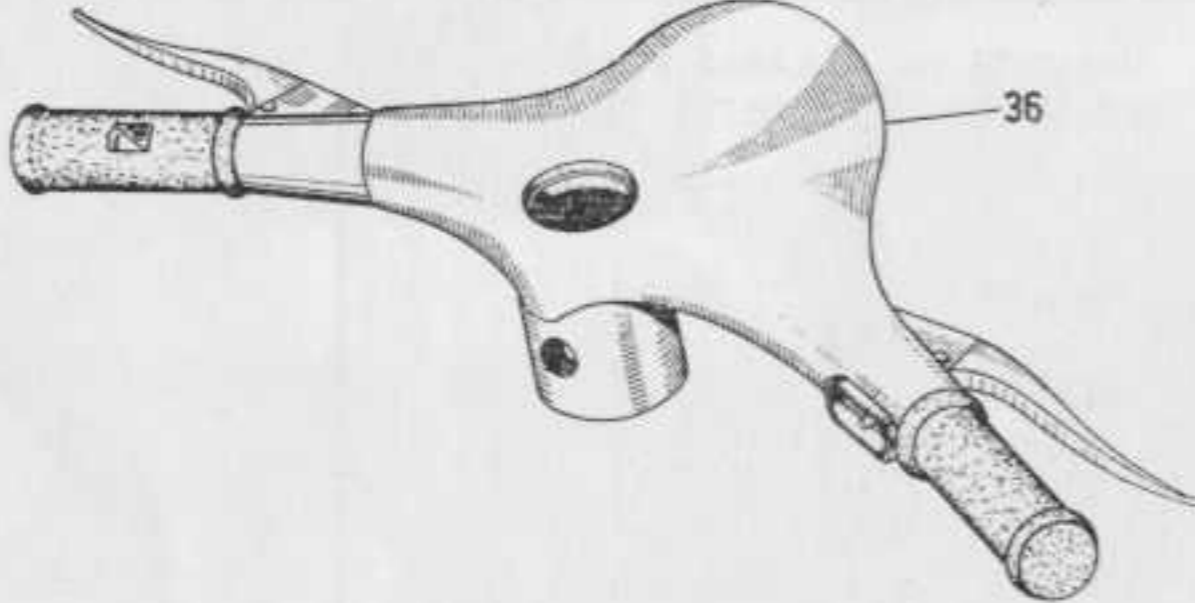
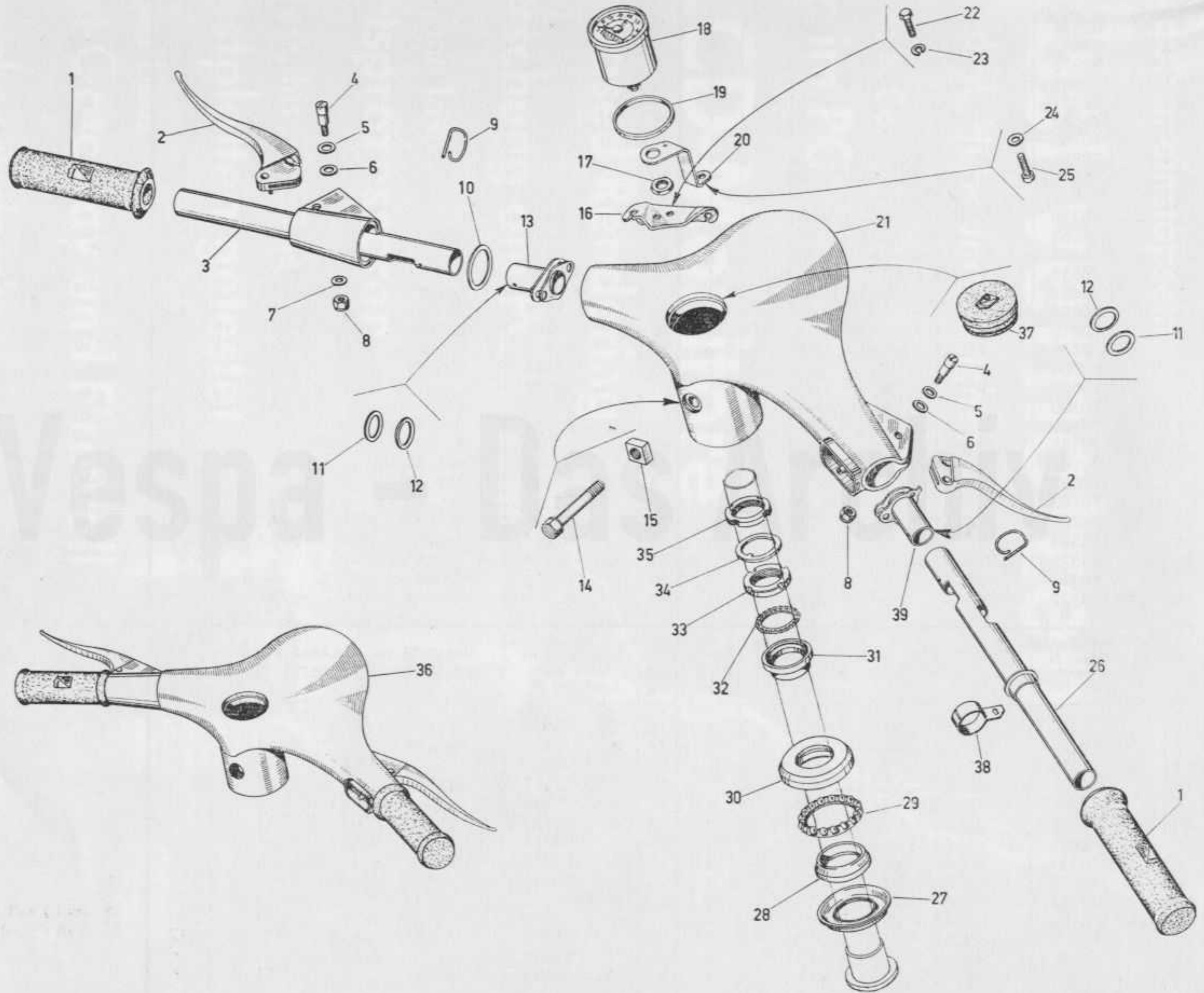
Sterzo - Parafango - Mozzo - Antifurto
 Tube de direction - Garde - boue - Moyeu - Antivol
 Steering column - Mudguard - Wheel hub - Security lock
 Steuerrohr - Kotflügel - Vorderradnabe - Diebstahlsicherung



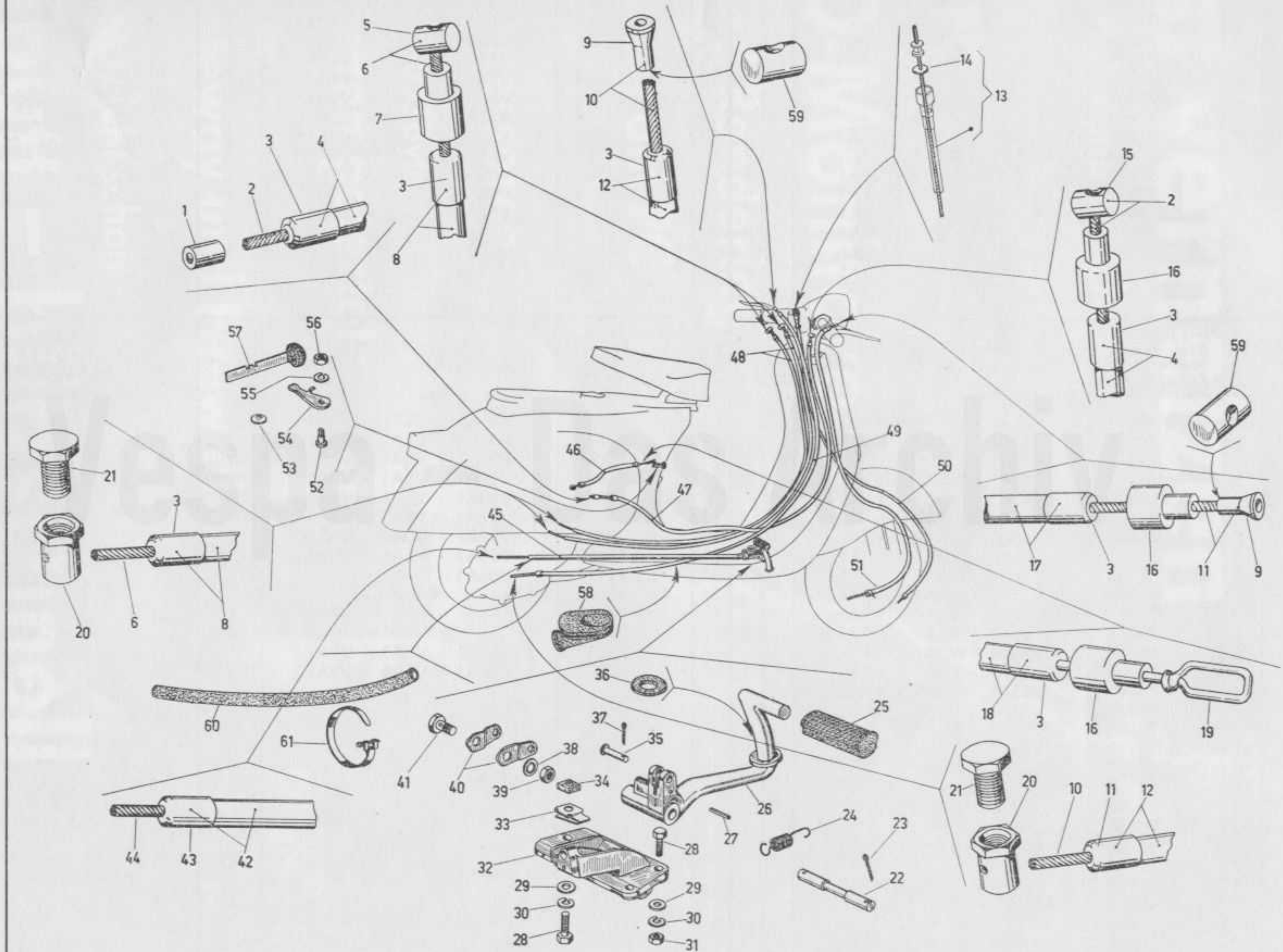
Ammortizzatore anteriore
Amortiseur avant
Front damper
Vorderer Stoßdämpfer



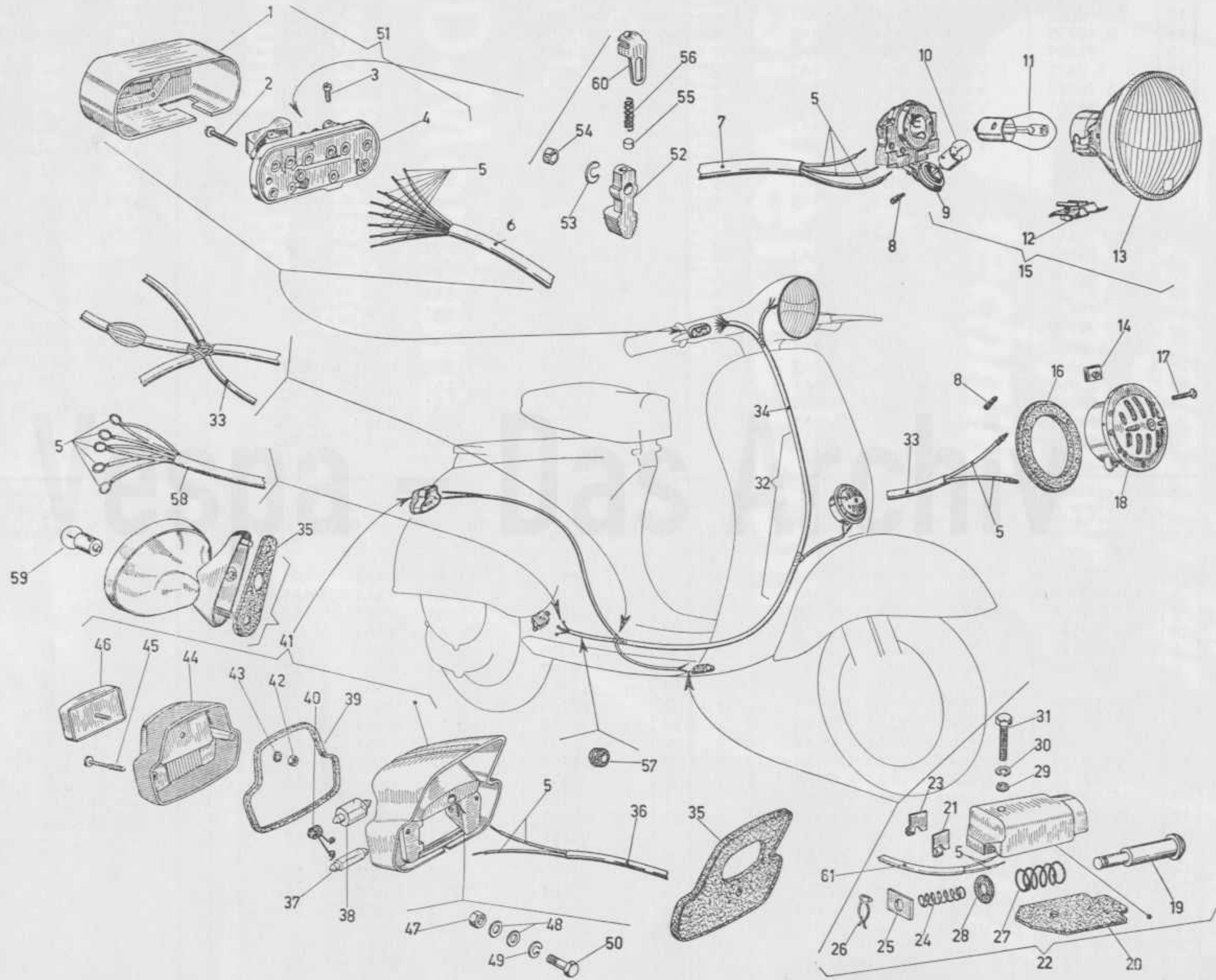
Manubrio - Contachilometri
Guidon - Compte - kilomètres
Handlebars - Speedometer
Lenker - Kilometerzähler



Trasmissioni - Pedale freno posteriore
Transmissions- Pédale frein AR.
Control cables - Rear brake pedal
Übertragungen - Hinterrad - Bremspedal

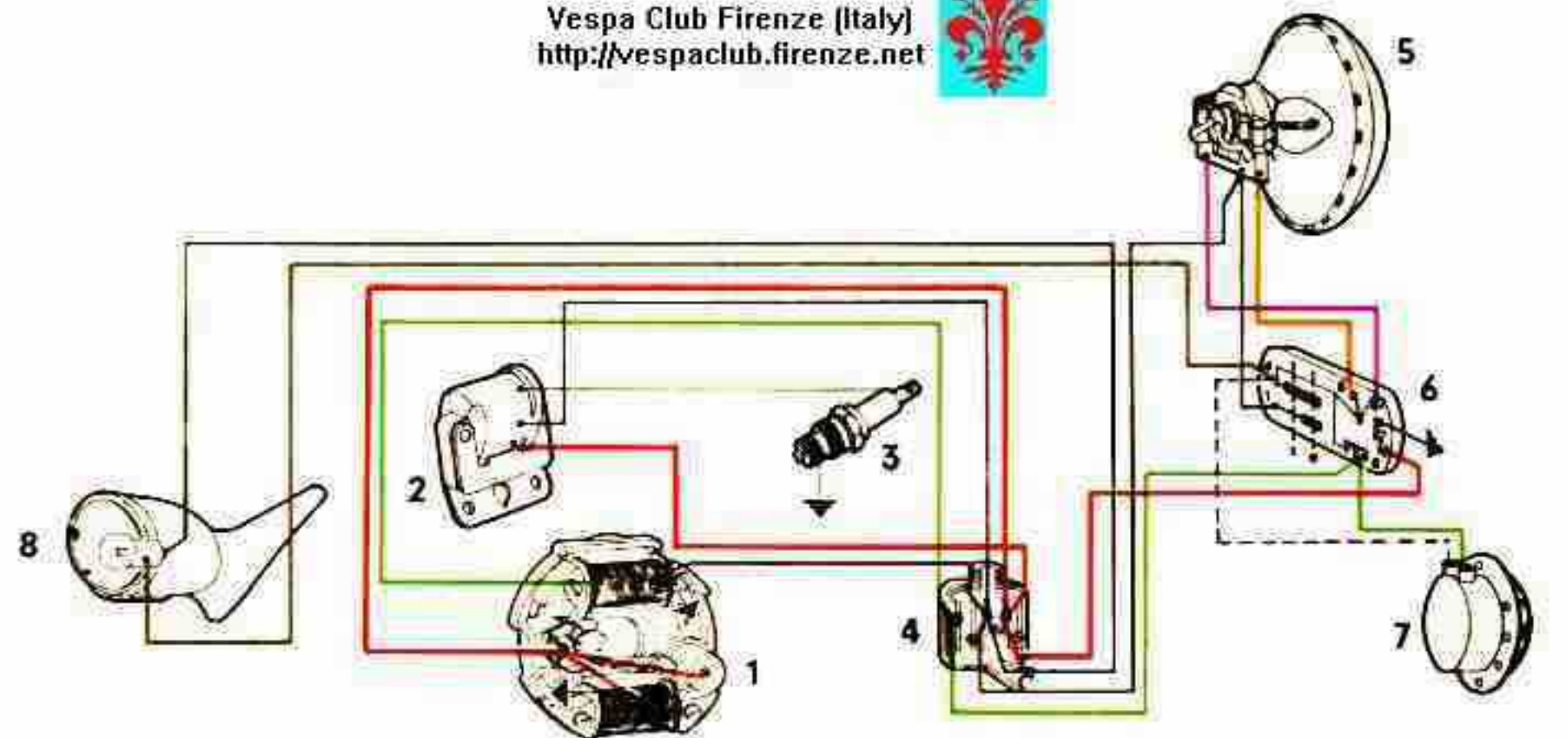


Faro - Fanalino - Commutatore - Clacson
 Phare AV. - Feu AR. - Commutateur - Avertisseur
 Headlamp - Rear lamp - Switch unit - Horn
 Scheinwerfer - Schlussleuchte - Umschalter - Hupe



SCHALTPLAN VESPA 50 S

Vespa Club Firenze (Italy)
<http://vespaclub.firenze.net>



gestrichelte Linie = weißes Kabel

1. Lichtmaschine
2. Zündspule
3. Zündkerze
4. Stromabnehmer

5. Scheinwerfer
6. Lichtschalter mit Hupenkopf und Kurzschlußknopf
7. Hupe
8. Schlußlicht